

# Skylight Light Kit Installation Guidelines



Before beginning the installation of your Light Kit, please read through the entire installation instructions.

Maximum of 100W Incandescent Lamp or 26W Compact Fluorescent Lamp

## TOOLS REQUIRED

- ◆ Ladder
- ◆ Power Drill
- ◆ 3mm and 16mm drill bits
- ◆ Measuring tape or ruler
- ◆ Pen or marker
- ◆ Phillips Drill Bit

fig.1

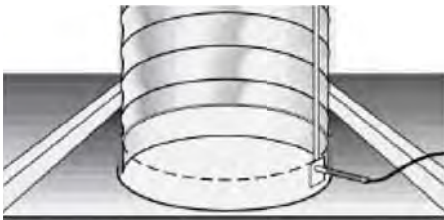


fig.2

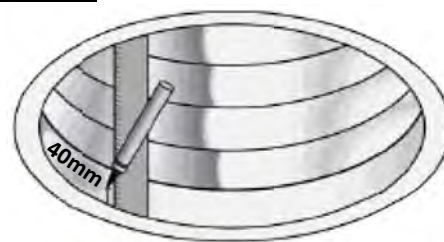
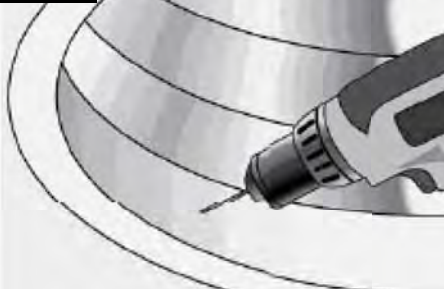


fig.3



### Step 1

The Light Kit is to be installed after completing the installation of your skylight. You will need to remove the Diffuser Lens.

### Step 2

Make sure there are no obstructions in the roof space where you will install the Light Kit. You should have a clearance of at least 125mm (fig.1)

### Step 3

Measure and mark a spot 40mm from the bottom edge of your ceiling frame (fig.2)

### Step 4

Drill a 3mm pilot hole on your "marked spot" (fig.3)

### Step 5

Drill a 16mm hole through your pilot hole (fig.4)

### Step 6

Insert the wire and flexible metal tube of the Light Kit through the hole you have drilled. Now, while holding the Light Kit in position, use a power drill with a phillips head bit and screw the four self-drilling screws through the guide holes in the Light Kit and into the ceiling parts (fig.5)

### Step 7

Wiring from the Light Kit must be properly terminated inside a junction box and securely affixed to a structural member in the roof space, as per local building codes.

fig.4

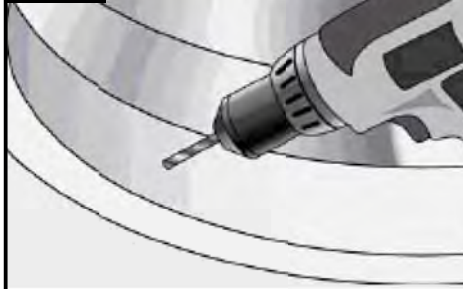
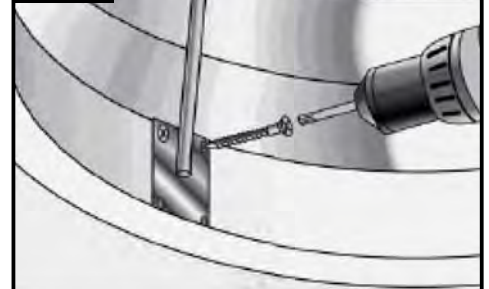


fig.5



Consult a licensed electrician to complete the installation process, complying with all applicable building codes.